

# 755nm 808nm 1064nm Hair Removal Machine

LB-DL300+





# PRODUCTS SHOW



## Indications:



Permanent hair removal  
for all skin types





# PRODUCT ADVANTAGES

✓ Best triple laser wavelengths  
755nm+808nm+1064nm

✓ No pigmentation, suitable for any  
skin type, no pigmentation

✓ Quick Treatment  
Up to 10hz in motion treatment with  
12\*20mm big spot size, very efficient.



✓ 755nm: Specially targeted Blonde  
hair, fine hair

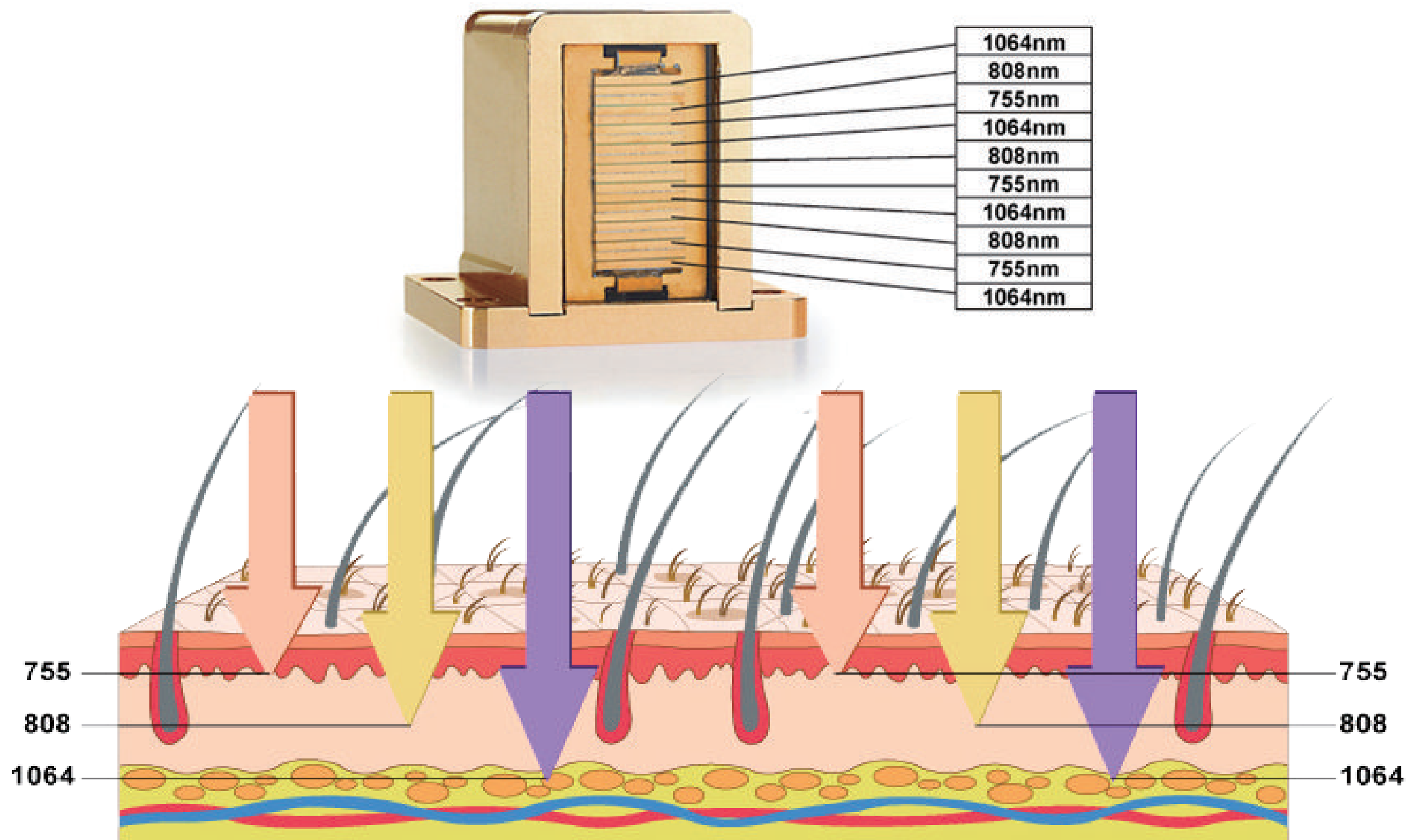
✓ 1064nm: Specially targeted dark,  
tanned skin

✓ 808nm: Suitable for almost all  
hair type



# WORKING PRINCIPLE

The Diode laser is operating at a wavelength of Alex755nm, 808nm and 1064nm, 3 different wavelengths come out at the same time to work in the different depth of hair to work full range permanent hair removal result. Alex755nm delivering powerful energy is absorbed by melanin chromophore, making it ideal for skin type 1, 2 and fine, thin hair. The longer wavelength 808nm works deeper hair follicle, with less absorption of melanin, which is more safety for dark skin hair removal. 1064nm works as infrared red with high water absorption, it is specialized for dark skin hair removal including tanned skin.



# WORKING PRINCIPLE

## ALEX 755nm WAVELENGTH

The Alexandrite wavelength offers more powerful energy absorption by the melanin chromophore, making it ideal for the widest range of hair types and color- especially light- colored and thin hair. With more superficial penetration, the 755nm wavelength targets the Bulge of the hair follicle and is especially effective for superficially embedded hair in areas such as the eyebrows and upper lip.

## SPEED 808nm WAVELENGTH

The classic wavelength in laser hair removal, the 808nm wavelength, offers deep penetration of the hair follicle with high average power, a high repetition rate and a large 2cm spot size for fast treatment. The 808nm has a moderate melanin absorption level making it safe for darker skin types. Its deep penetration capabilities target the Bulge and Bulb of the hair follicle while moderate tissue depth penetration makes it ideal for treating the arms, legs, cheeks and beard.

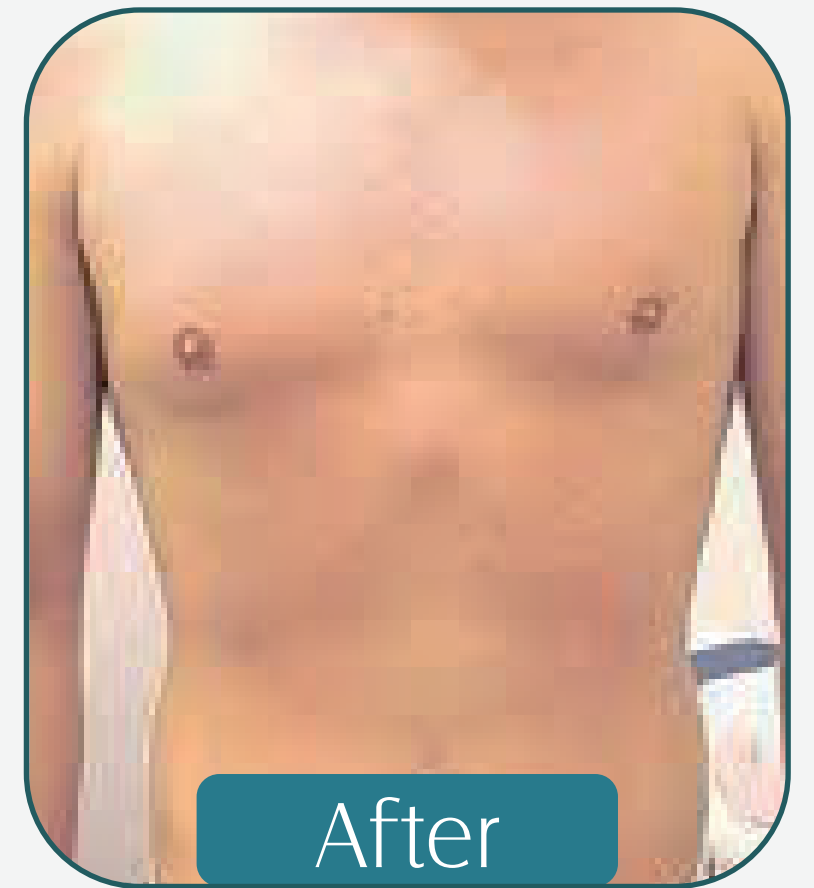
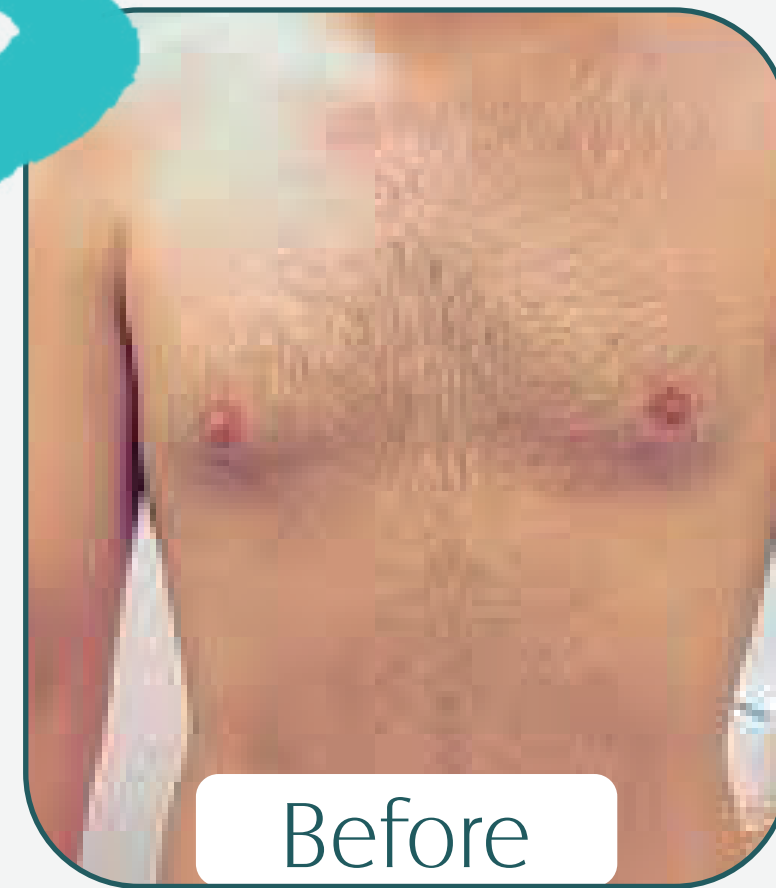
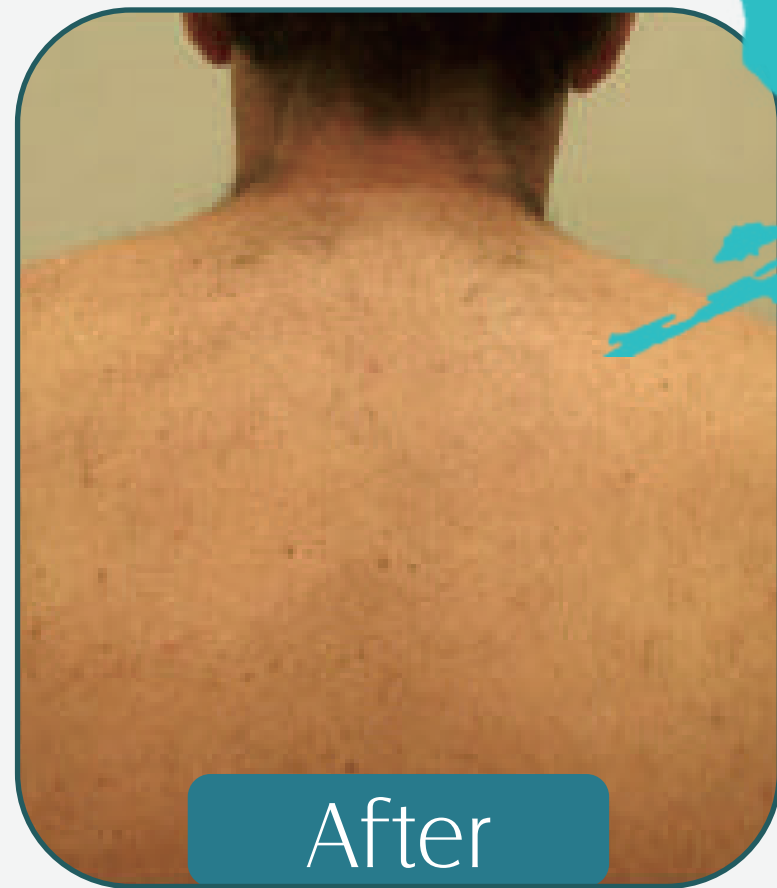
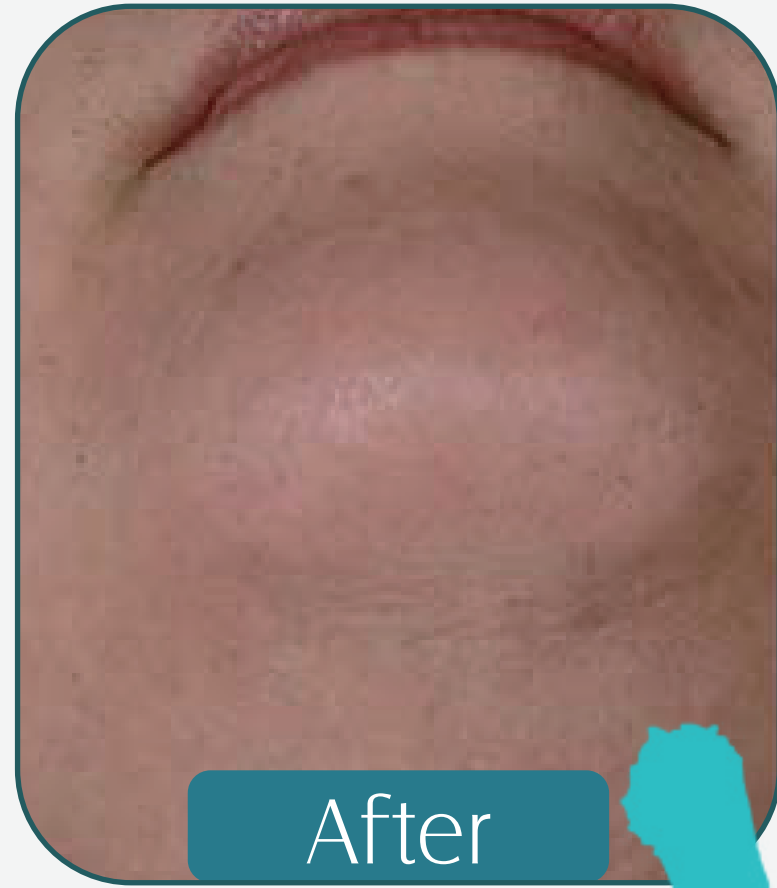
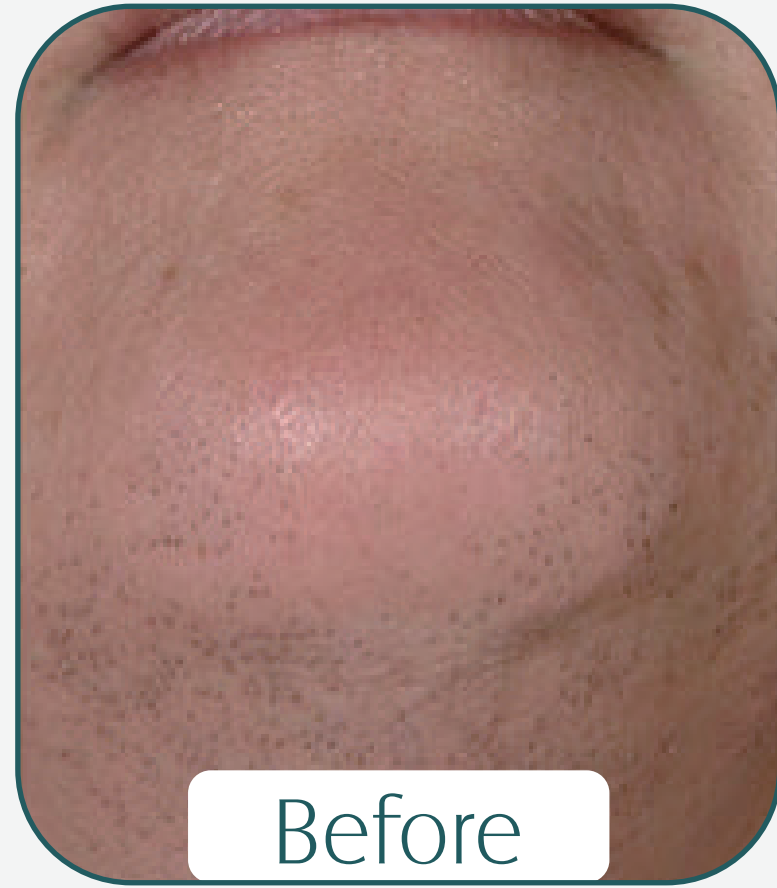
## YAG 1064nm WAVELENGTH

The YAG 1064 wavelength is characterized by lower melanin absorption, making it a focused solution for darker skin types. At the same time, the 1064nm offers the deepest penetration of the hair follicle, allowing it to target the Bulb and Papilla, as well as treat deeply embedded hair in areas such as the scalp, arm pits and pubic areas. With higher water absorption generating a higher temperature, the incorporation of the 1064nm wavelength increases the thermal profile of the overall laser treatment for most effective hair removal

# PRODUCT PARAMETERS

|                                |  |
|--------------------------------|--|
| Model                          | LB-DL300+  |
| Laser type                     | Semiconductor laser  |
| wavelength                     | 755nm/808nm/1064nm   |
| Screen Size                    | 12 Inch touch screen   |
| <b>Energy density</b>          | <b>5-120J/cm<sup>2</sup> (Deviation<math>\leq\pm 2\%</math>)</b> |
| Pulse width range              | 5-300ms  |
| <b>Spot size</b>               | <b>12*20mm</b>   |
| Frequency                      | 1-10HZ   |
| Light spot surface temperature | 0-30°C   |
| <b>Cooling System</b>          | <b>TEC Cooling 4 kinds</b>                                       |
| Dimension                      | 110CM *45CM *55CM  |
| Net weight                     | 52kg   |
| Fuse specification             | Ø5×2510A   |
| <b>Input Power</b>             | <b>2500W</b>   |
| <b>Output power</b>            | <b>1000W</b>   |
| Power                          | AC220V $\pm 10\%$ 10A 50HZ , 110v $\pm 10\%$ 10A 60HZ            |

# BEFORE VS AFTER



VS